

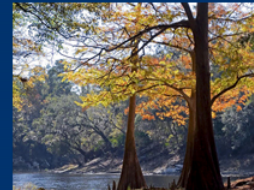


Florida Department of Environmental Protection

DEP Regulatory Compliance: Your Local District Office

**Jennifer K. Smith
District Director
Southeast District**

October 24, 2018





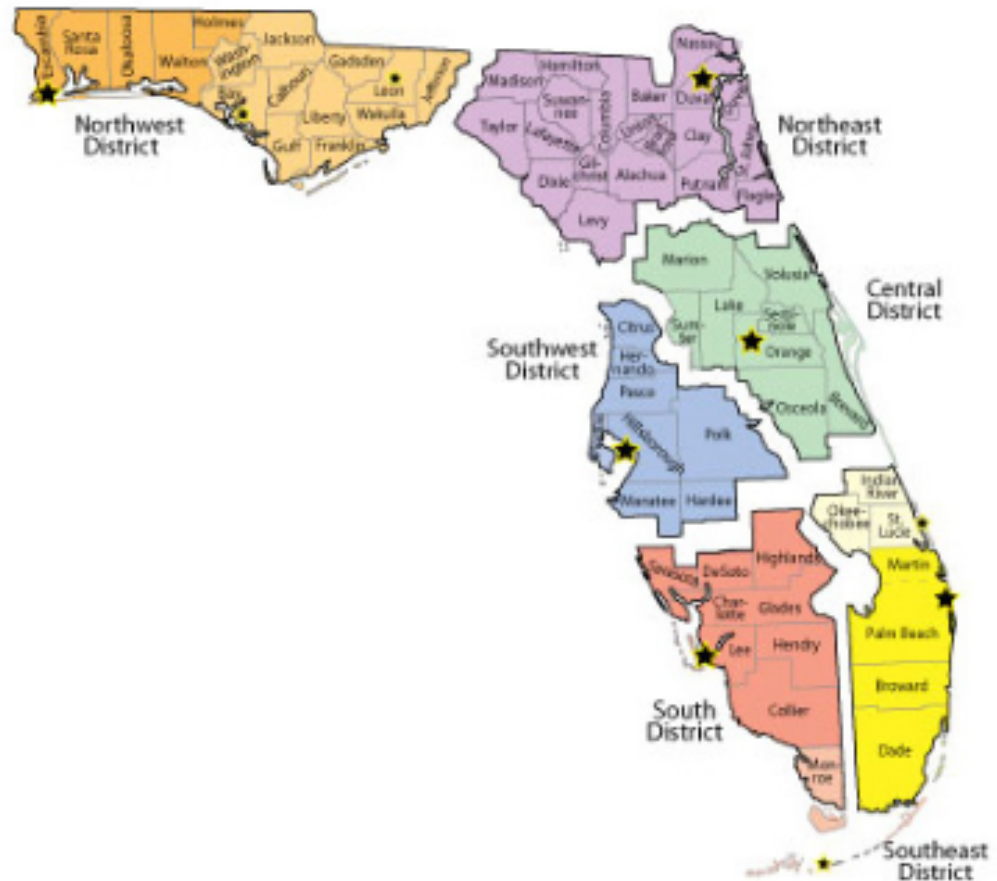
Purpose

- DEP regulatory District offices organization
- District compliance assurance and permitting programs- purpose and programs we cover
- Priorities- Compliance rates, Outreach, level of service, time to process
- Relationships: Divisions-Districts-Counties
- Key components of CAP and Permitting



Six Regulatory Districts

- The Department is divided into three primary areas:
Regulatory Programs,
Land and Recreation,
Ecosystems Restoration
- Six regulatory districts
- Approximately one-third of the population of Florida lives in the Southeast District



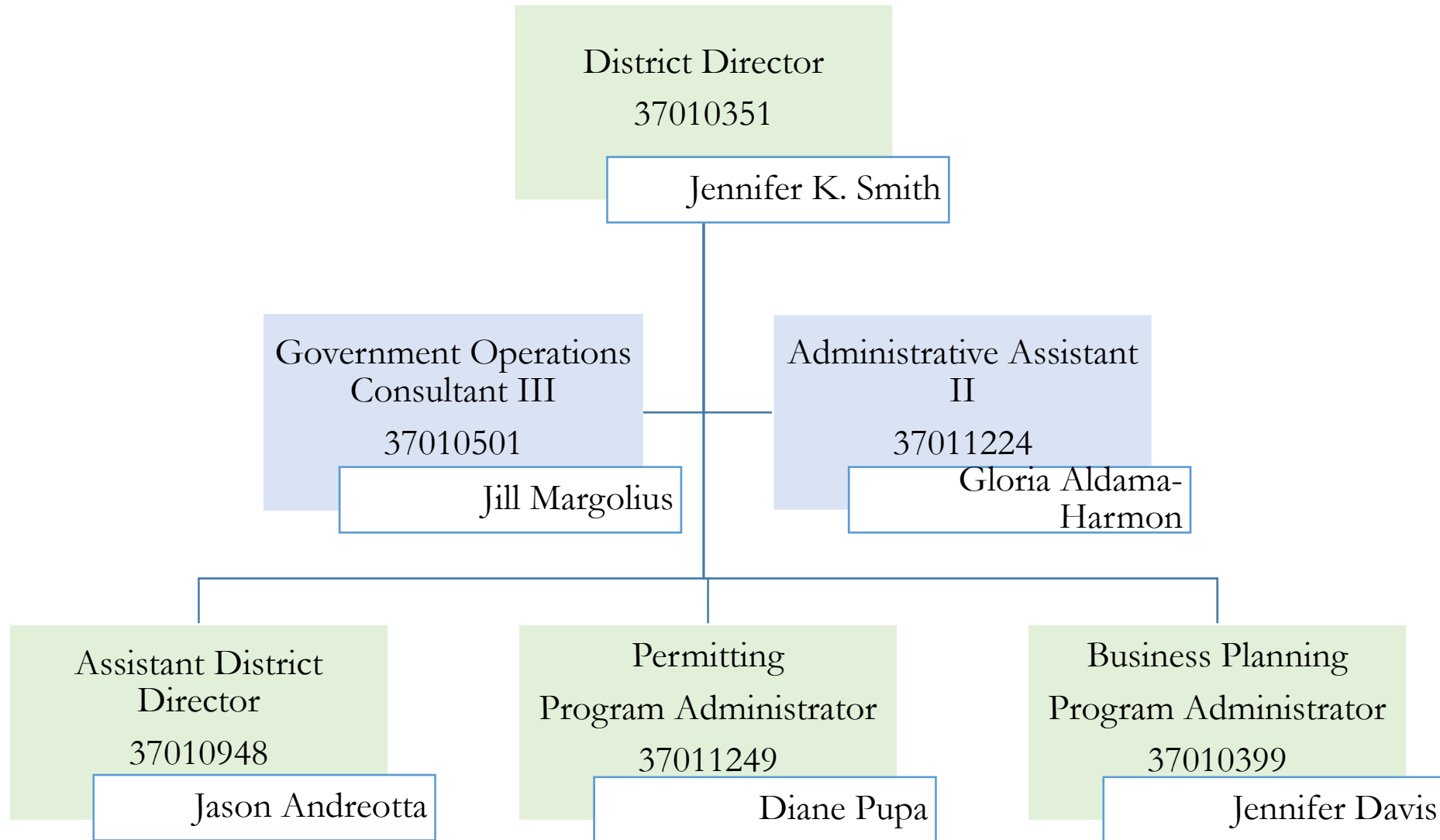


District Organization

- Focus is on multi-media knowledge, inspectors and permitting staff
- In many districts, air and waste staff share responsibilities in these programs
- Referred to as Compliance Assurance Program (CAP)
- Created/hired new position, Assistant District Directors, responsible for all C&E
- Created/hired new position, Permit Program Administrators, responsible for all permitting

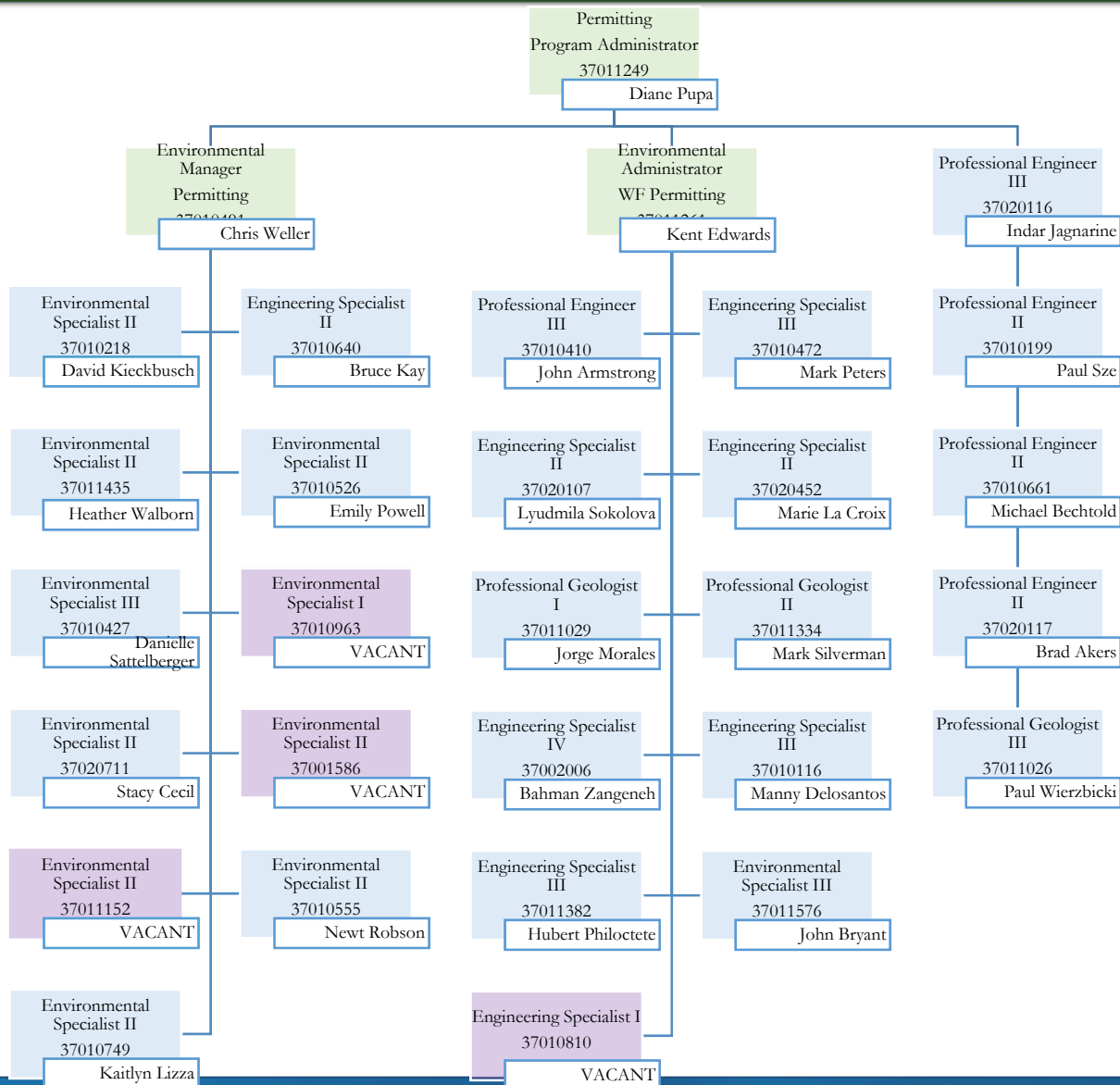


SED Organization



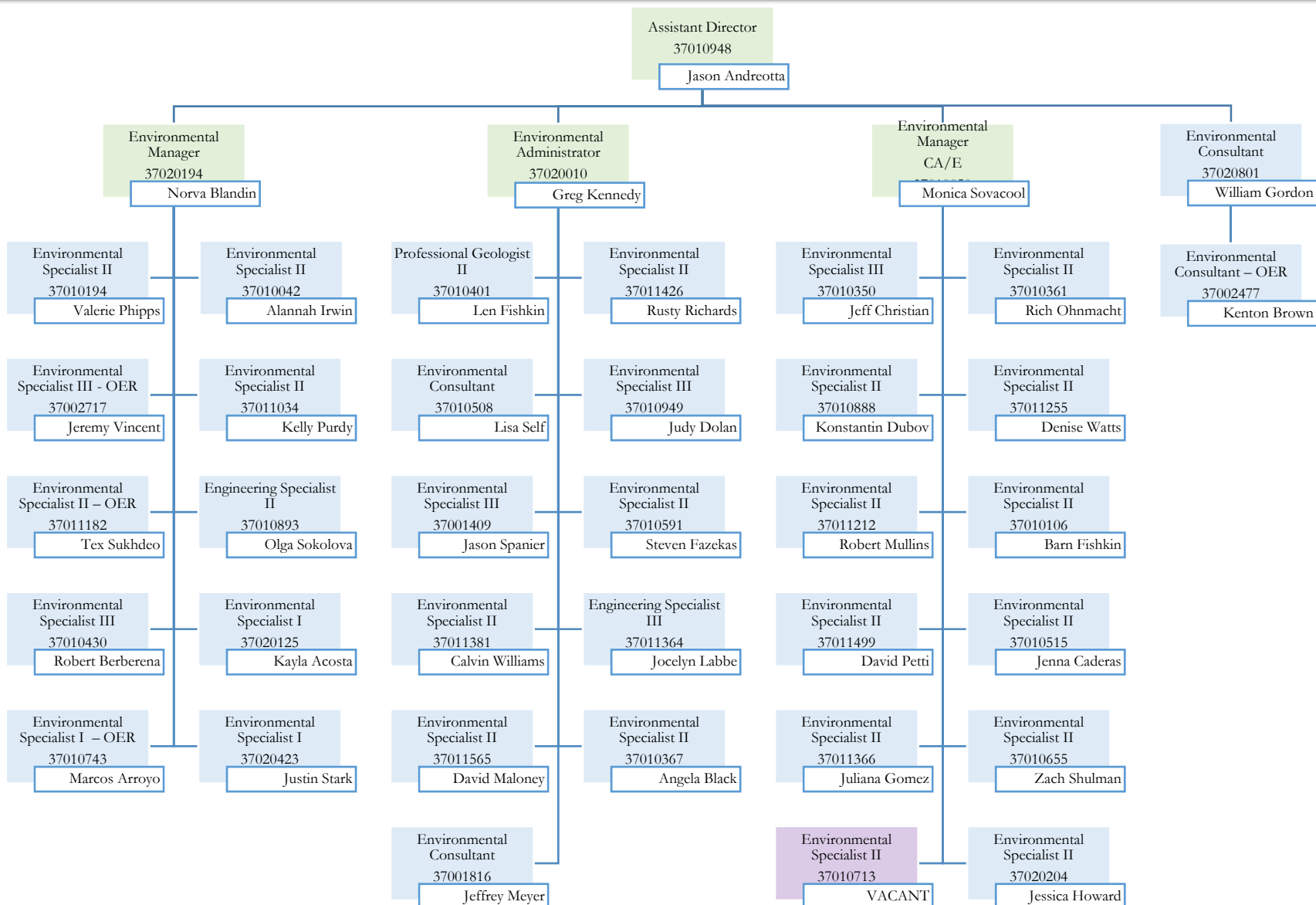


SED Permitting Organization





SED CAP Organization





Regulatory Priorities

- Compliance
 - Make practical interpretations and decisions
 - Look for “actual” environmental outcome
 - Outreach
- Permitting
 - Time to Process
 - Pre-application meetings
- Improve program efficiency and reduce costs
- Promote fairness and statewide consistency
- Provide regulatory certainty

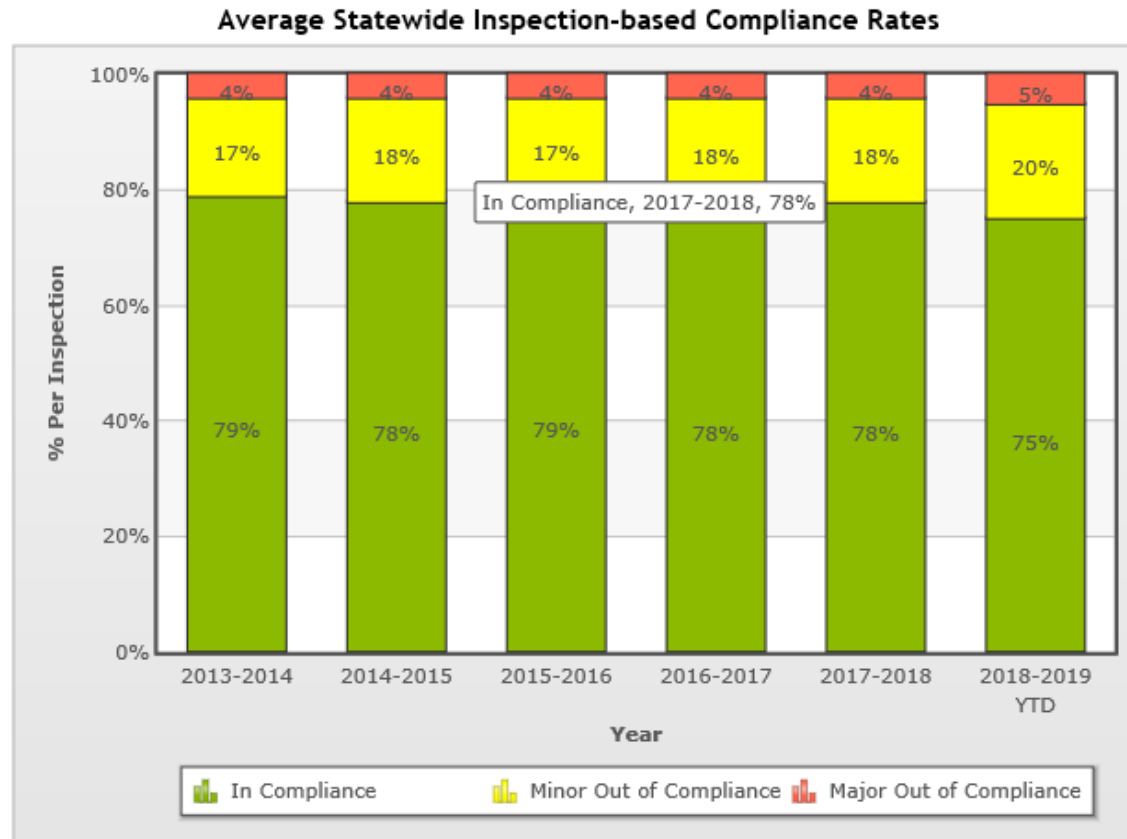


Compliance Assurance Program

- **The Southeast District's Compliance Assurance Program's responsibilities include:**
- Oversee compliance with environmental laws in multiple areas (air, waste, water and state lands)
- Conduct inspections to determine the compliance status of regulated facilities
- Provide the regulated community with compliance assistance
- Promote high compliance rates through outreach activities
- Respond to complaints and citizen inquiries both timely and effectively
- Enforce environmental laws fairly and consistently to protect human health and the environment
- Provide Florida's residents, businesses and visitors with the highest level of customer service



Compliance Rates



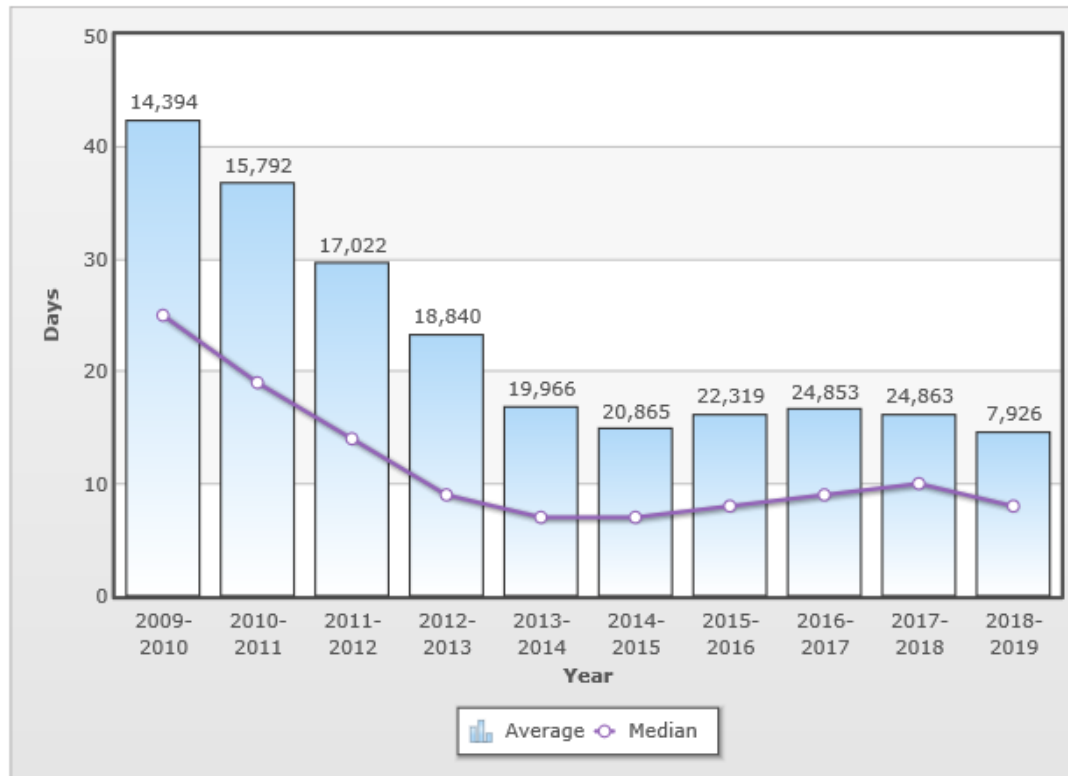
Click the boxes below for detailed breakdowns by Program Area.



Permitting- Time to Process

Total Time To Process: Department-wide

The number above each column is the number of permits processed in that year.



Click the boxes below for detailed breakdowns by Program Area.



SED numbers: FY 17/18

- Compliance Rate:
 - 96.75%
- Outreach
 - 133 events, 7,091 people reached
 - Target trainings
 - Open House
- Permitting: Time to Process
 - 17 days



Local Programs (SED)

- Air, Waste, and Water
- Each program operates under:
 - Specific Operating Agreement (SOA)
 - For specific duties, authorizes to act on behalf of DEP
 - Combination of C&E and/or permitting and/or ambient monitoring
- Division oversight with District support



District CAP Key Components

Districts and Locals are “boots on the ground” and perform day-to-day C&E activities:

- Conduct inspections
- Witness stack tests, opacity tests, RATAs
- Review reports
- Database input
- Respond to complaints
- Conduct outreach
- Work with communities on local issues



CAP Program Drivers

- Environmental protection
- Division's "Level of Service"
- Grant commitments to EPA
- EPA's "SRF" elements and ECHO Dashboard
- DEP's Performance Dashboard
- Compliance rates
 - Outreach



Non-compliance Response

- Non-compliance is non-compliance and identified as such by our staff and in our database
- Response depends on:
 - Actual environmental impact
 - Magnitude and duration
 - Major or minor source
 - Poor operation, preventable
 - Significant or minor non-compliance
 - EPA categorization
 - Back in compliance
 - Corrective actions still needed
 - History of non-compliance



Non-compliance Response

- Appropriate responses include:
 - Compliance Assistance Offer (CAO)*
 - Warning Letter (WL)
 - Notice of Violation (NOV)
 - Consent Order (CO)
- DEP Directive 923
- Division Coordination
 - Peer review



Thank you!

Jennifer K. Smith
District Director
Southeast District
Department of Environmental Protection
Jennifer.k.smith@floridadep.gov
561-681-6642





Local Environmental Agencies Panel



Laxmana Tallam

A&WMA Conference

October 24, 2018

Approved Local Air Pollution Control Program

FL DEP Delegated

- Air
- Solid Waste

Department of Health

- County Ordinance – Medical Waste Incinerators
- Manure Management ordinance
- Additional Regulations; [Nuisance]
- County Hazardous Waste Regulation

Significant Sources

Solid Waste

- Disaster Debris Management Sites (DDMS)
- Increased Commercial & Demolition Debris Recycling Facilities








Significant Sources...

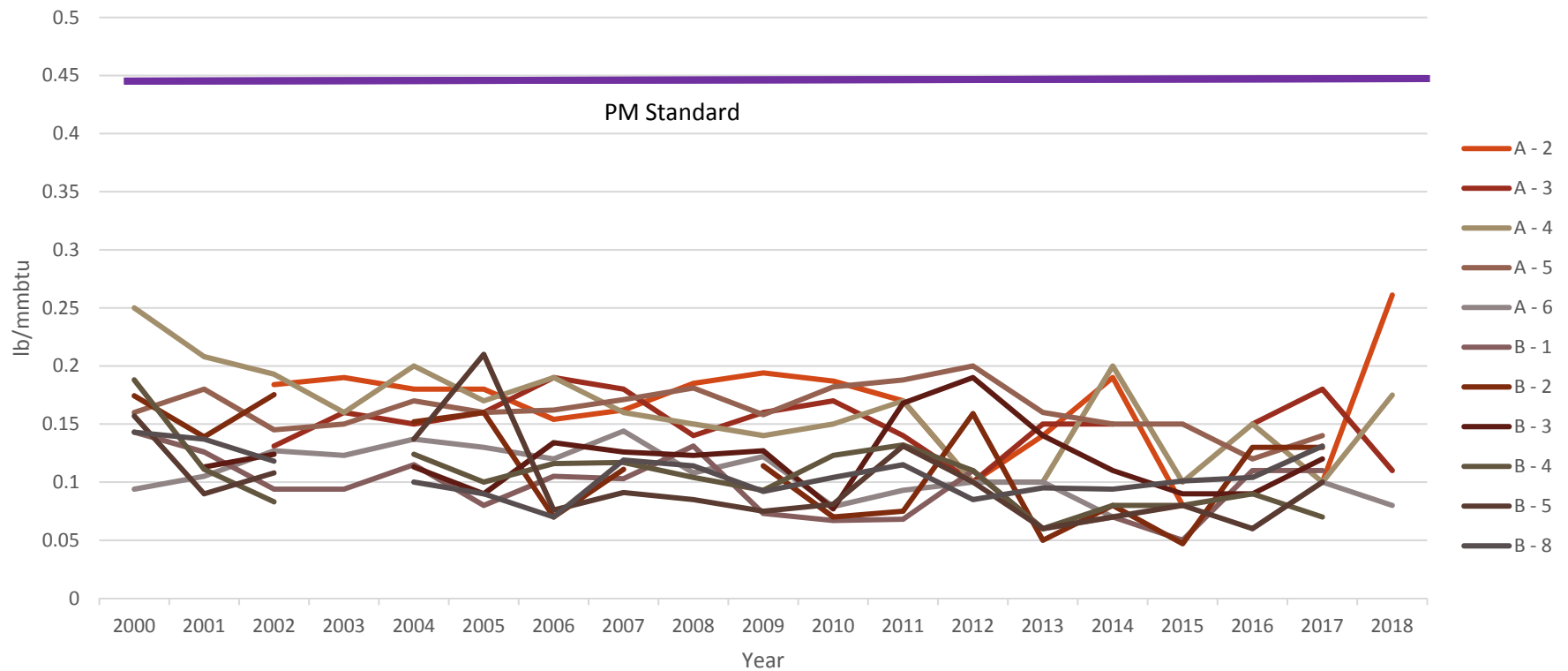
Title V

- **Power Plants**
- **Sugar Mills [40 CFR 63 DDDDD]**
- **Pump Stations [40 CFR 63 ZZZZ]**

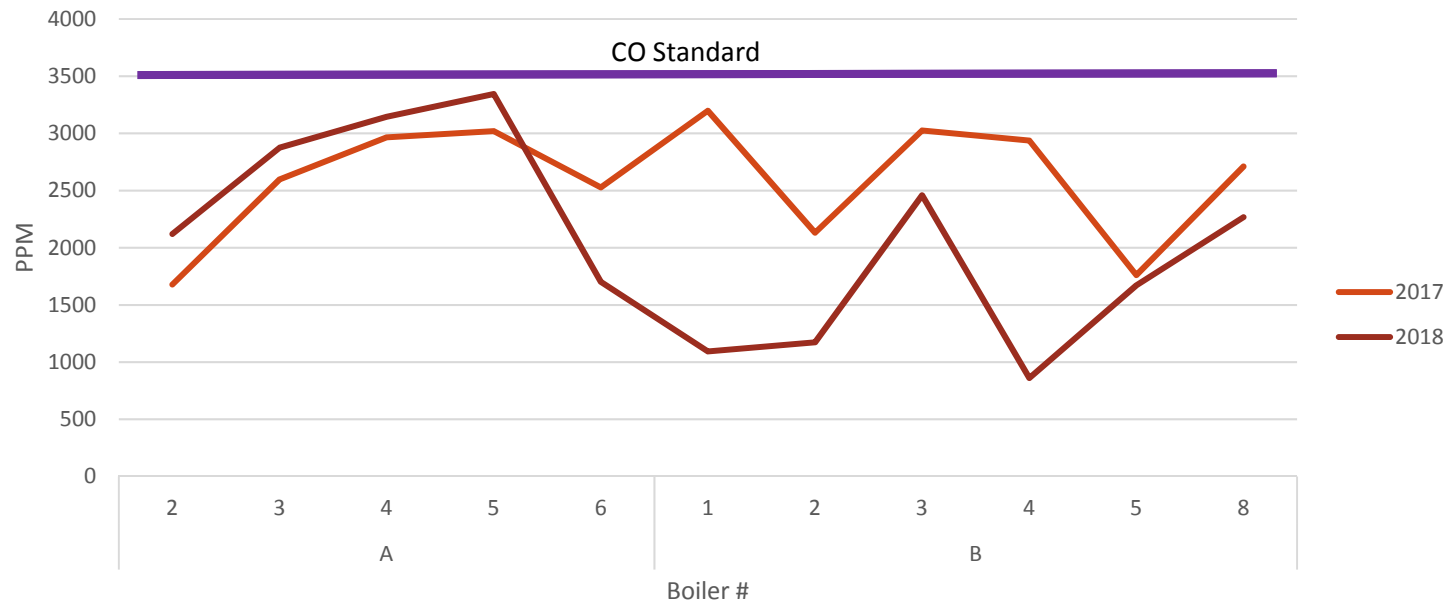
Change of Standards for Hybrid Suspension Biomass Boilers [Effective January 2016]

	9/13/2004	3/21/2011	1/31/2013	11/20/2015
	Existing Large Solid Fuel	Hybrid suspension/grate units designed to burn biomass	Hybrid suspension/grate units designed to burn biomass	Hybrid Suspension grate units designed to burn biomass
PM (lb/MMbtu)	0.07	0.04	0.44	0.440 
TSM (lb/MMbtu)	0.0010	0.0000	0.00045	0.00045 
HCL (lb/MMbtu)	0.09	0.04	0.02	0.022 
Hg (lb/Tbtu)	9.00	4.60	5.70	5.70 
CO (ppm)	0.00	3500	2800	3500 
Dioxin/Furan (ng/dscm) teq)	0.00	0.20	0.00	0.000

PM Emissions Data from Sugar Industry Boilers



CO Emissions Data from Sugar Industry Boilers



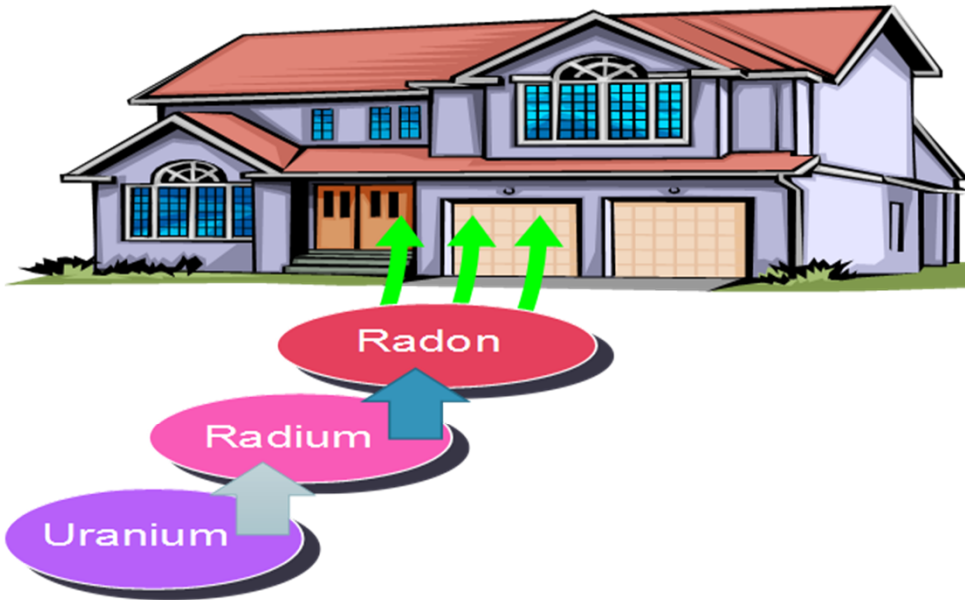
DOH Related.....

Indoor Air

- Radon
 - Free Home Testing Kit
- Lead

Special Projects

- Emission Factor Study – Sugar cane burning *Atmospheric Environment* 55 (2012) 164-172
- PAH Apportionment in Palm Beach County *A&WMA* 66 (2016) 377-386



FREE RADON TESTING

Florida Health –Palm Beach County, Division of Environmental Public Health

Radon is a naturally occurring radioactive gas released in rock, soil and water that can build up in your home to very high levels.

Radon is colorless, tasteless, and odorless radioactive gas, testing your home is the only way of knowing if your home is safe!



Call

561-837-5938

Website:

[Radon.floridahealth.gov](http://radon.floridahealth.gov)

<http://palmbeach.floridahealth.gov>

PALM BEACH COMMUNITY RADON TESTING PILOT PROGRAM

**Radon-induced
Lung Cancer**

**Kills 21,000
Americans Each
Year**

**U.S. Surgeon
General
recommends ALL
homes be tested
for radon gas**

**Testing is FREE
and Quick!**

**FLORIDA
DEPARTMENT OF
HEALTH – PALM
BEACH COUNTY**
800 Clematis Street
West Palm Beach, FL
33401





An Industry and Agency Partnership for Pollution Prevention

What do we do?

Our goal is to educate and increase awareness of Pollution Prevention techniques to area businesses in a non-regulatory manner. Through literature, workshops, the Internet, and other means, the P2 Coalition strives to provide practical information and ideas to prevent pollution.



An Industry and Agency Partnership for Pollution Prevention

Florida Health—
Palm Beach County

Florida Atlantic
University

Florida Power &
Light

Pratt & Whitney

P.B.C.
Environmental
Resources
Management,

City of West Palm
Beach

Solid Waste
Authority of P.B.C.

Bethesda Medical
Center

MSIA Associates

Engineering Service
Professionals

PBC Green Energy
Council

PBC Fleet
Management

Aerojet/
Rocketdyne

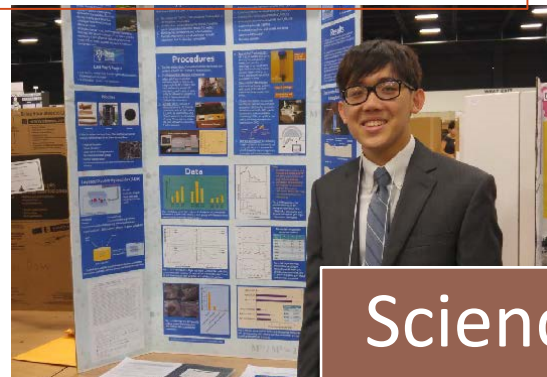




An Industry and Agency Partnership for Pollution Prevention



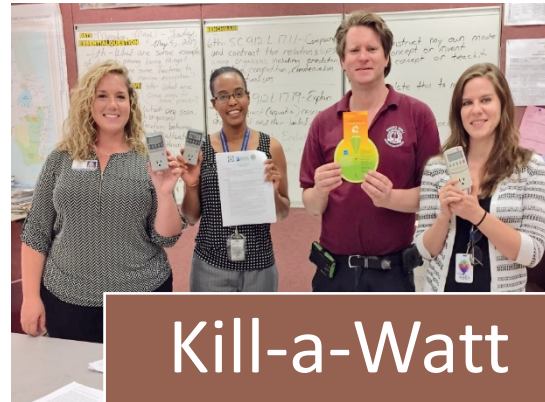
Clean it



Science Fair



Storm Drain



Kill-a-Watt

THANKS!

Laxmana Tallam, P.E.

FL DOH- Palm Beach County

Ph: 561-837-5974

Laxmana.Tallam@FLHealth.gov



Comprehensive Everglades Restoration Plan Projects

**Air & Waste Management Association, Florida
Section 54th Annual Conference & Expo
October 24, 2018**

**Jennifer Leeds, Section Administrator
Everglades Policy & Coordination Division, SFWMD**

What We Do

The Florida Legislature established the South Florida Water Management District to manage and protect water resources in our region

- Flood Control
 - Central & Southern Flood Control District in 1949
 - 2,100 miles of canals and 2,000 miles of levees/berms
- Water Supply
 - Five distinct water supply plans for 8.1 million people
- Water Quality Improvements
 - Stormwater Treatment Areas, Best Management Practices, Restoration Strategies
- Ecosystem Restoration
 - Comprehensive Everglades Restoration Plan

Everglades Restoration

The Comprehensive Everglades Restoration Plan (CERP) was authorized by Congress in 2000 to restore, preserve, and protect the south Florida ecosystem

- 18 CERP projects being planned, designed or under construction
- Despite the progress of restoration, challenges still persist:
 - Damaging discharges to the northern estuaries
 - Environmental
 - Socioeconomic
 - Reduced flows to the Everglades
 - Dry outs
 - Impacts to fish and wildlife habitat
 - Reduced storage in the Everglades system



-
- Legend**
- Agular Storage and Recovery (ASR)
 - Surface Water Projects Planning Initiatives
 - Program**
 - CEQP
 - Critical Project
 - OWM
 - Everglades Water Quality Improvement
 - NEERP
 - Restoration Strategies
 - C-130 Areas
- Projects funded with Land Acquisition Trust Fund (LATF)**
- Map Date: July 2018**
- DISCLAIMER**
This map is a representation of planning data and the South Florida Water Management District does not guarantee the accuracy of the information shown on this map. The map is for informational purposes only and does not affect the rights of any person or property. The map is not a legal document and the map is not a guarantee of any project or program. The map is not a guarantee of any project or program.
- BASE CREDITS**
State Map, South Florida Water Mgmt. District
State plans projection, Florida east zone, NAD 83 WARP, US Feet
- CONTACT INFORMATION**
South Florida Water Management District
3301 Gun Club Rd, West Palm Beach, FL 33409
888-688-6888, FL 561-433-2348
P.O. Box 38888 - West Palm Beach, FL 33409-8888



- sfwmd.gov**

St. Lucie River C-44 Reservoir/STA



- S-404 Spillway Status is complete
- STA Status:
 - Construction Start: October 2014
 - Construction Finish: Spring 2019
- Pump Station Status:
 - Construction Start: April 2015
 - Construction Finish: Fall 2018
- Reservoir under construction complete Dec 2020



Lake Okeechobee Watershed Restoration Planning Project

Provides measureable benefits to Lake Okeechobee Ecology, the Northern Estuaries and reduces water supply cutbacks

Shallow Aboveground Storage

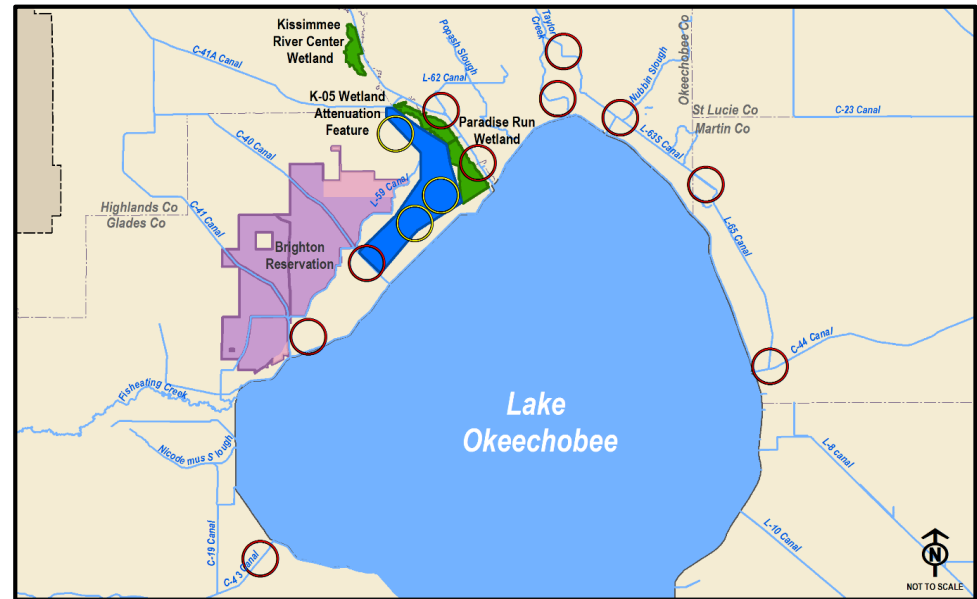
- ~12,500 acres
- ~43,000 acre-feet

Aquifer, Storage and Recovery

- 80 ASR Wells
- 448,000 acre-feet per year

Wetland Restoration

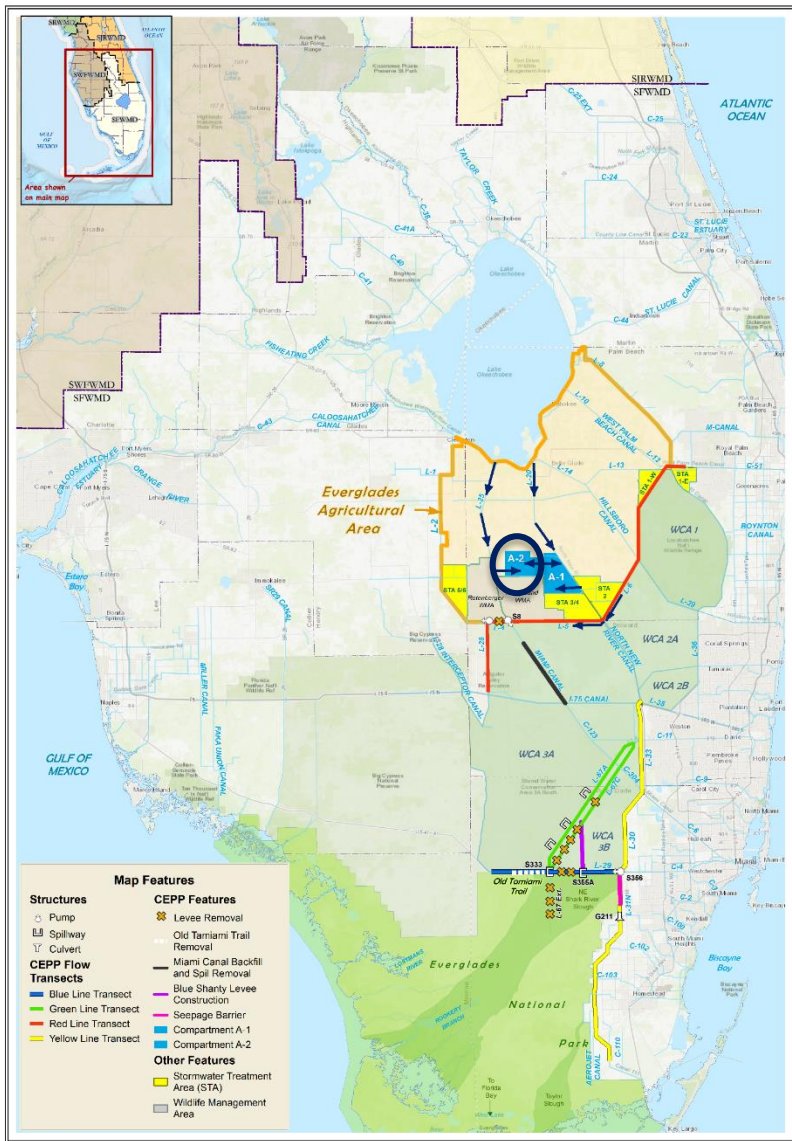
- Kissimmee River Center: 1,200 acres
- Paradise Run: 4,100 acres



LEGEND

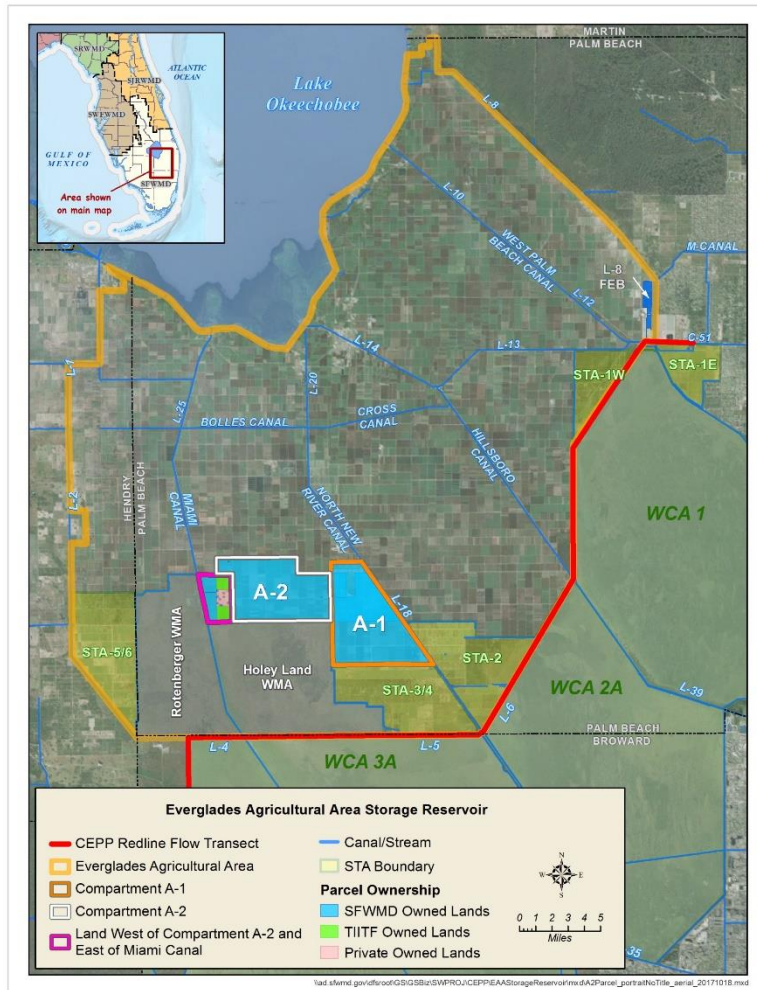
- Wetland Attenuation Feature
- Wetland Restoration
- Tribal Trust Lands
- Tribal Owned Lands
- ASR Well Cluster
- Wetland Attenuation ASR Well Cluster

Central Everglades Planning Project



- Authorized in the 2016 Water Infrastructure Improvements for the Nation (WIIN) Act
- Provides the first increment of restoration in the central Everglades:
 - Reduces damaging discharges to the northern estuaries
 - Provides ~210K ac-ft of additional flow to the central Everglades on an average annual basis
- Opens the central part of the system to allow for additional flow south
- Everglades Agricultural Area Storage Reservoir Feasibility Study
 - Includes the A-2 component

Everglades Agricultural Area Storage Reservoir Feasibility Study



- Continue to improve the quantity, quality, timing and distribution of water flows to the Northern Estuaries and Central Everglades
- Meet applicable water quality standards
- Increases flows to approximately 370,000 ac-ft (average annual)
- Reservoir:
 - 240,000 acre-feet storage
 - 10,500 acres, 23 feet deep
- Stormwater Treatment Area:
 - 6,500 acres
- Canal Conveyance in Miami and North New River Canals
- July 11, 2018 – ASA(CW) submitted the report to Congress

Restoration Projects are the key to addressing estuary discharges

Short Term:

- Dispersed Water Management (DWM) Projects
 - Public/private partnerships
 - Public Lands
- Estuary Protection Wells
- Temporary Pumps
- Temporary Deviations
- Herbert Hoover Dike Rehabilitation
- Lake Okeechobee Regulation Schedule Restudy
- CERP C-43 Reservoir
- CERP C-44 Reservoir and STA

Long Term:

- CERP Lake Okeechobee Watershed Restoration Project
 - Above ground storage
 - Aquifer Storage and Recovery Wells
- CERP EAA Reservoir – CEPP PACR
- CERP C23/C24 North and South Reservoir and STA
- NEEPP Water attenuation and treatment projects
 - Lakeside Ranch and Brady Ranch
- NEEPP Estuary Protection Wells
- NEEPP Aquifer Storage and Recovery Wells



Discussion